

CoverAlls™

Ultrasound Probe Cover Kit

Instructions for Use

REF

39548	5" X 48" (13 X 122CM)
39596	5" X 96" (13 X 240CM)
39648	6" X 48" (15 X 122CM)
39696	6" X 96" (15 X 240CM)

DESCRIPTION

CoverAlls™ Ultrasound Probe Cover Kits are sterile, single-patient procedure, disposable kits to be used as a protective cover over medical ultrasound transducer/probe to protect patients, users, and equipment from cross-contamination. Each kit includes a 3D Box-end Sterile Cover, EcoVue® HV 20 g Sterile Packet, and (2) Elastic Bands.

INDICATIONS FOR USE

CoverAlls Probe Cover may be used as a protective cover over medical ultrasound transducer/probe during ultrasound procedures where sterility is indicated or otherwise desired, or during procedures where cross-contamination is of concern.

CONTRAINDICATIONS

None known.

WARNINGS

CoverAlls Probe Cover is intended for single-use only. Do not reuse, reprocess or resterilize single-use device. Reuse, reprocessing, or resterilization could result in contamination of the device, risk of infection, or adverse reaction for the patient.

PRECAUTIONS

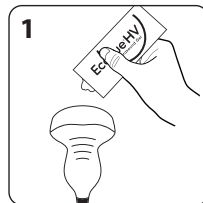
Discard and do not use CoverAlls Probe Cover if package is damaged or opened.

PRE-USE, HANDLING, AND INSPECTION

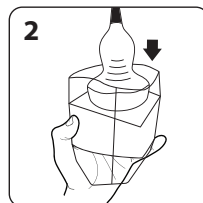
- CoverAlls Probe Cover should be thoroughly inspected prior to use to ensure packaging is not damaged or defective.
- To reduce the risk of cross-contamination, standard practices for sterile procedures should be followed.

STEP-BY-STEP INSTRUCTIONS

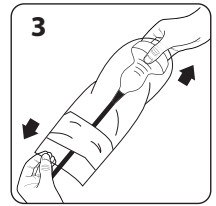
1. Apply gel to the transducer head prior to inserting transducer into the cover. *Alternatively, apply gel directly inside the probe cover.*



2. Using a sterile technique, insert transducer into probe cover.



3. Pull the probe cover all the way down over the transducer and cord, utilizing the arrow sticker as a guide.



4. Ensure the transducer extends to the end of the probe cover and work out any wrinkles or air bubbles. Air bubbles left between cover and transducer head may cause poor image quality.
5. Verify there is a small amount of gel between the transducer and the probe cover; secure with enclosed elastic bands.
6. Inspect probe cover to ensure there are no holes or tears.
7. After use, dispose of components in accordance with internal facility guidelines.

STORAGE CONDITIONS

Store in cool, dry place.

Distributed by:
HR HealthCare
2600 Eastern Blvd., Suite 201
York, PA 17402 USA
hrhealthcare.com



hrhealthcare.com/symbolsglossary

HR HealthCare, the HR HealthCare logo, EcoVue, and CoverAlls are trademarks or registered trademarks of HR HealthCare ©2022, 2024 HR HealthCare. All rights reserved.

LBL-0016 Rev. 2 (08/2024)
RM: 1-041-2050 Rev 2